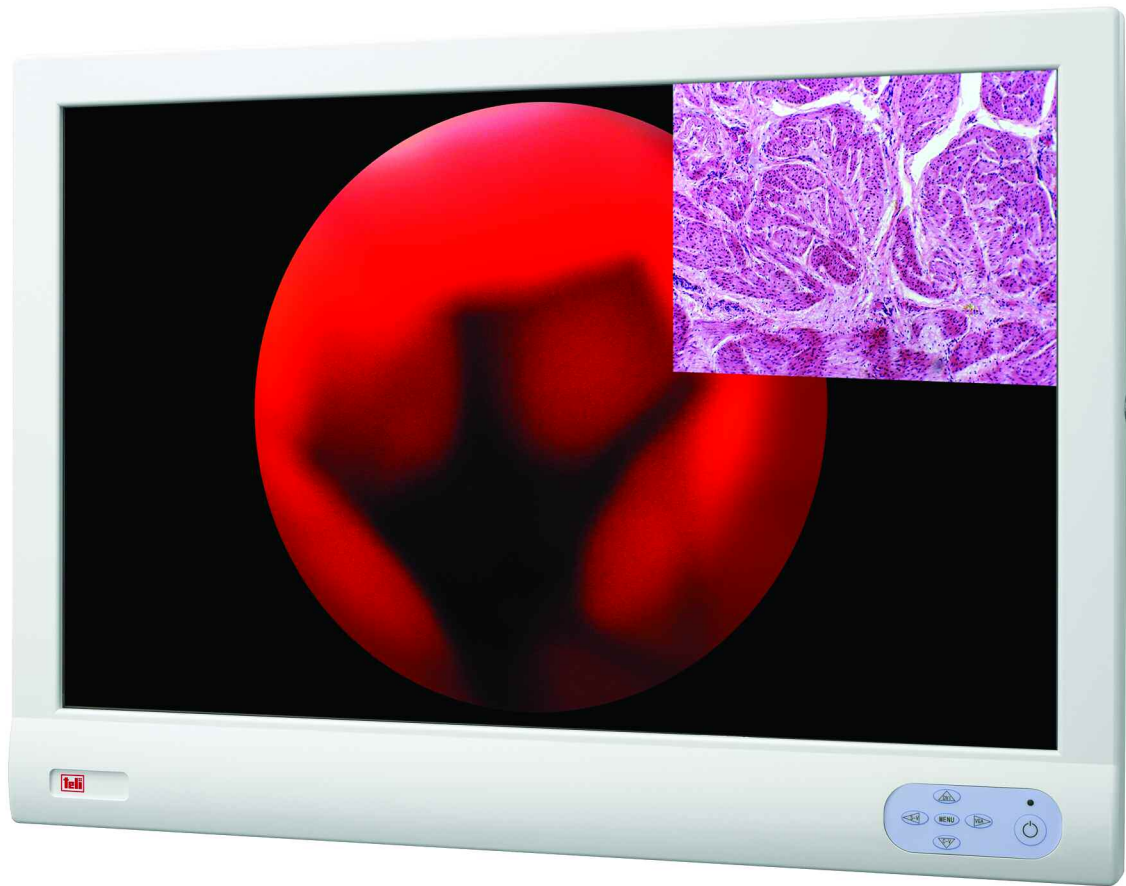




24-Inch Medical Grade LCD Color Monitor for Variety of Medical Imaging Applications



T24MSA001-MD

Key Features

MEDICAL GRADE COLOR LCD MONITOR: Model T24MSA001-MD is UL6061 (Medical Grade) approved. Multiple analog and digital inputs make this monitor an outstanding choice for new state-of-the-art medical imaging systems and retrofitting displays in legacy systems.

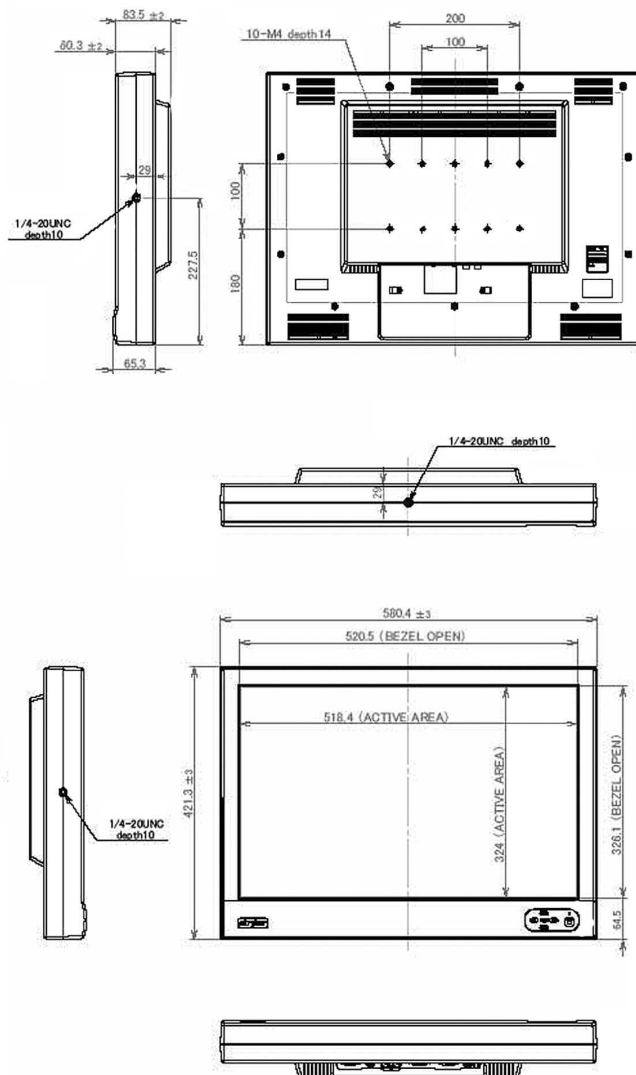
HIGH QUALITY IMAGES: 24-inch LCD widescreen monitor offer high brightness (500 cd/m²), high contrast (800:1) images in resolution support up to WUXGA (1920 x 1200). Color temperature can be user set along with level of RGB gain to match ambient lighting conditions. Full HD resolution (1080p) assures natural color reproduction and high level of differentiation during computerized tomography, ultrasound, endoscopy and other applications.

MINIMUM SPACE REQUIREMENTS: T24MSA001-MD is ideal for the replacement of older, bulky CRT monitors. It measures only 3.2 inches in depth to give users more space to work in.

MAXIMUM VERSATILITY: The monitor achieves flexibility with video input connections for composite video, Y/C, RGB, DVI-S and DVI-D inputs. It fully supports both NTSC and PAL.

Specifications

LCD Panel	Type a-Si TFT Active Matrix
LCD	24 inch vertical (16:9)
Active Screen Size	518.4(H) x 324.0(V) mm
Pixel Pitch	0.270 mm x 0.270 mm
Pixel Format	1920(H) x 1200(V) Pixels RGB stripes arrangement
Color Depth	8-bit, 16.7M colors
Brightness 500	cd/m2
Contrast Ratio	800:1
Response Time	6.5ms typical
Viewing Angle	R/L 178°, U/D 178°
Video Input	VBS: BNC connector YC: 4-pin DIN connector
RGB Input	15-pin D-sub connector
DVI	Input 24-pin DVI connector (DVI-I or DVI-D)
Resolutions	640 x 480, 800 x 600, 1024 x 768, 1280 x 1024, 1600 x 1200, 1920 x 1200, 1080p, 720p
Picture-in-Picture (PIP)	Yes
Picture out Picture (Pop)	Yes
On Screen Display Menu	Yes
Power Jack	DC24V
Auto termination	75 ohms
Weight	18.5 lbs (8.4 kg)
Dimension	16.6 (H) x 22.9 (W) x 3.3 (D) inches (421.3 (H) x 580.4 (W) x 83.5 (D) mm)
Operating Temperature	32°F to 104°F (0 to 40°C)
Mounting	Pole/wall VESA mount
Applicable standards	
Safety standard	UL60601, CE
EMC standard	IEC60601-1, IEC60601-1-2
Drip-proof standard	IP-X1



Second Opinion Telemedicine Solutions, Inc.
 3848 Del Amo Blvd, #303
 Torrance, CA 90503
 TEL: +1-310-802-6300
 www.soTelemed.com

